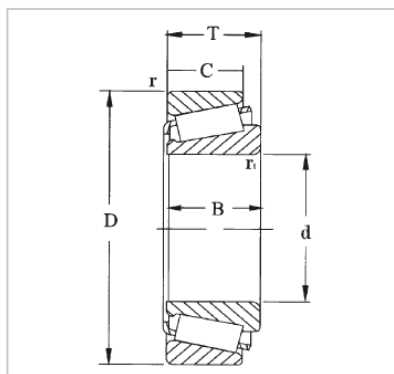


Single Row Tapered Roller Bearing

31300 Series-31319J2



WUXI GUANGQIANG BEARING TRADE CO.,LTD

Designação	31319J2
Dimensões principais (mm)	
d1	95
D	200
B	49.5
Classificações básicas de carga (KN)	
dyc (Cr)	292
stc (Cor)	355
Pu	39
Avaliações de velocidade (rpm)	
Classificações de velocidade	2400
Limitando a velocidade	3400
Peso (Kg)	6.95
ISO335	
Dimensões (ABMA)	7GB
Dimensões [mm]	
d	95
d1	145
B	45
C	32
r1,2 (min)	4
r3,4 (min)	3
uma	60
Dimensões de abutment e filete [mm]	
da (max)	114
db (min)	110
Da (min)	157
Da (max)	186
Db (min)	187
Ca (min)	5
Cb (min)	17.5
ra (max)	3
rb (max)	2.5
Valor	
e	0.83
Y	0.72
Yo	0.4

GQZ high quality 31300 Series Single Row Tapered Roller Bearing

Tapered roller bearings have tapered inner and outer raceways and rollers to handle simultaneous radial and thrust loads. Their axial load carrying capacity is directly related to the contact angle of the rollers and raceway shaft.

They are available in single-row, double-row, and four-row designs. The individual parts of tapered roller bearings are commonly sold separately as cups and cones. Cones contain the roller assembly and inner ring while cups include the outer ring. Full assembly units contain both the cup and cone. As separable bearings, different designs and sizes are available to accommodate a variety of applications.

Wuxi Guangqiang Bearing Trade Co.,Ltd-Tel:86-510-82601571-Email:gq@gqbearing.com,shary@gqbearing.com-http://www.bearing-asia.com